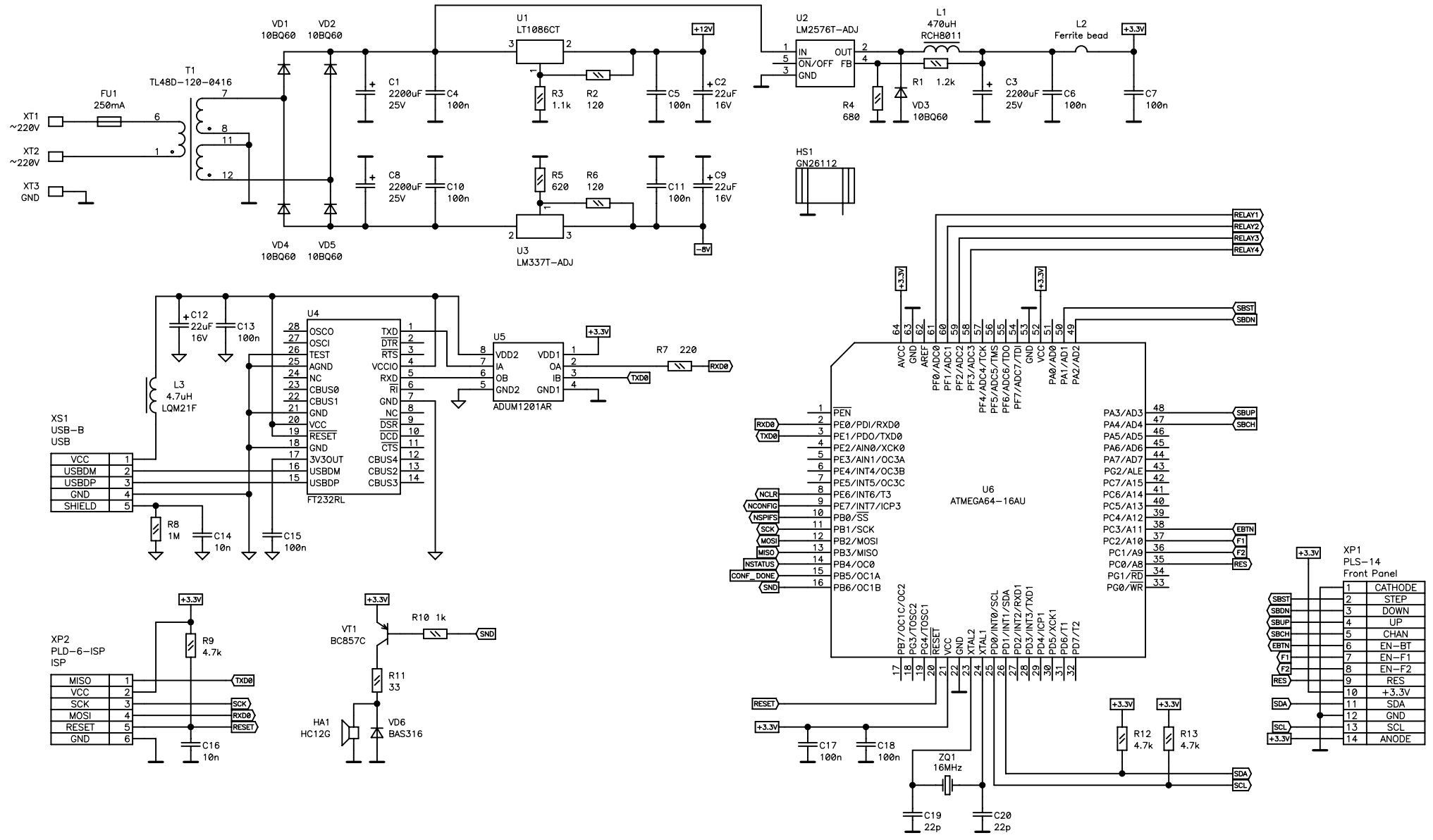


XS1
PBS-14_SMD
Main Board

CATHODE	1
STEP	2
DOWN	3
UP	4
CHAN	5
EN-BT	6
EN-F1	7
EN-F2	8
RES	9
+3.3V	10
SDA	11
GND	12
SCL	13
ANODE	14

Company Name NSM lab		
Size A35	Title PG-872	Rev A
Date Sat Aug 31, 2013	Drawn by NSM lab	
Filename PG-872_Panel_v3 Sheet 1 of 1		

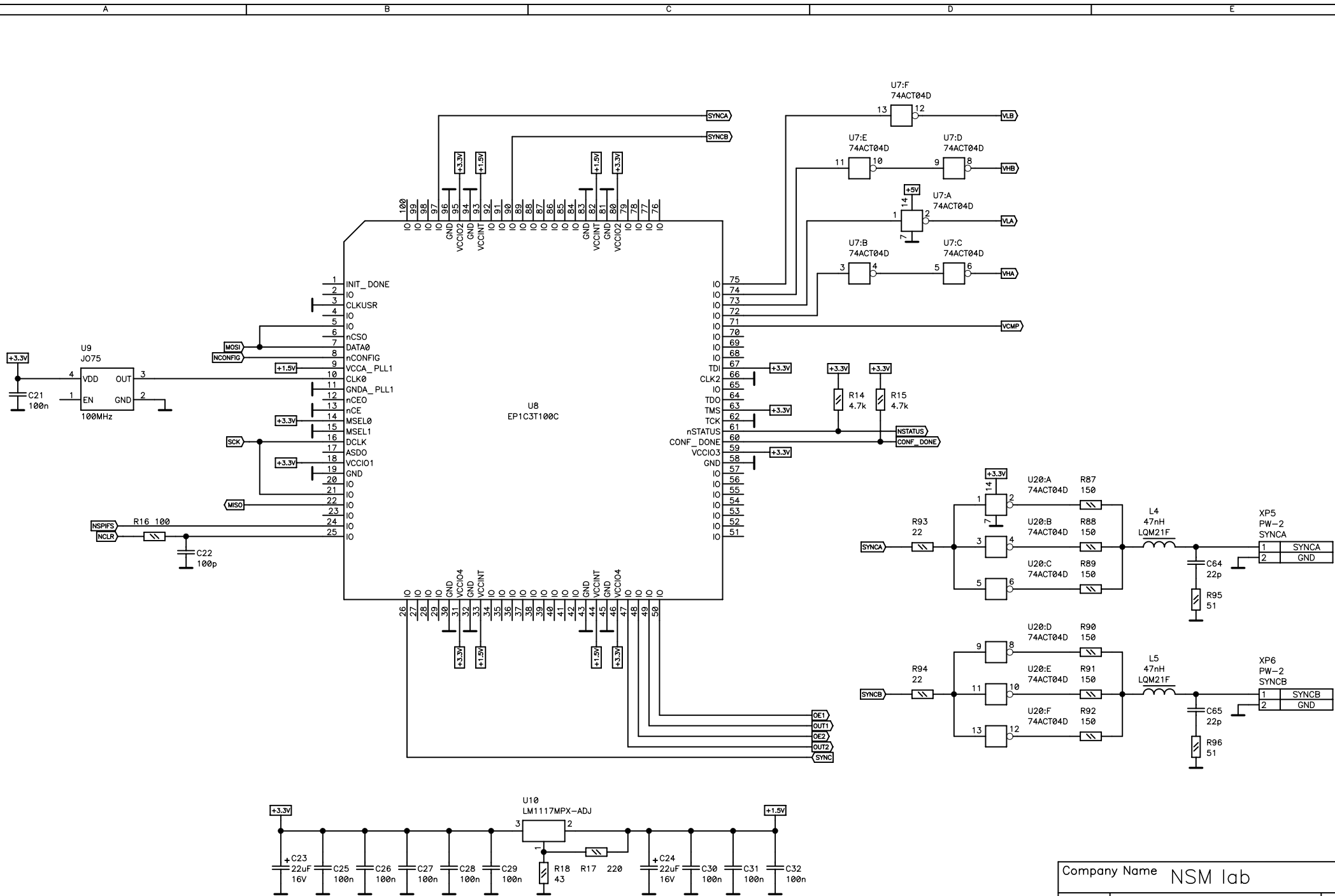


VCC	1
USBDM	2
USBDP	3
GND	4
SHIELD	5

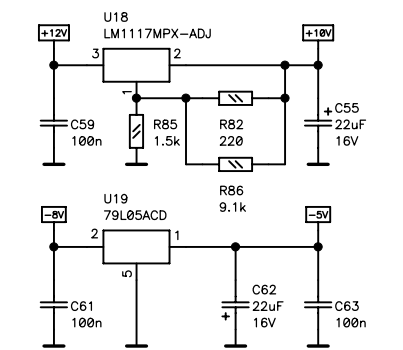
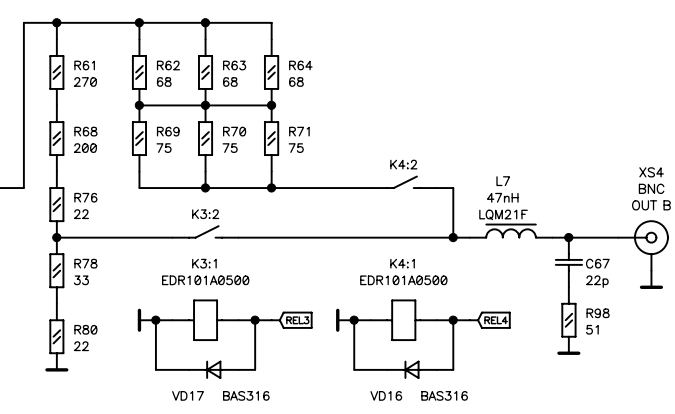
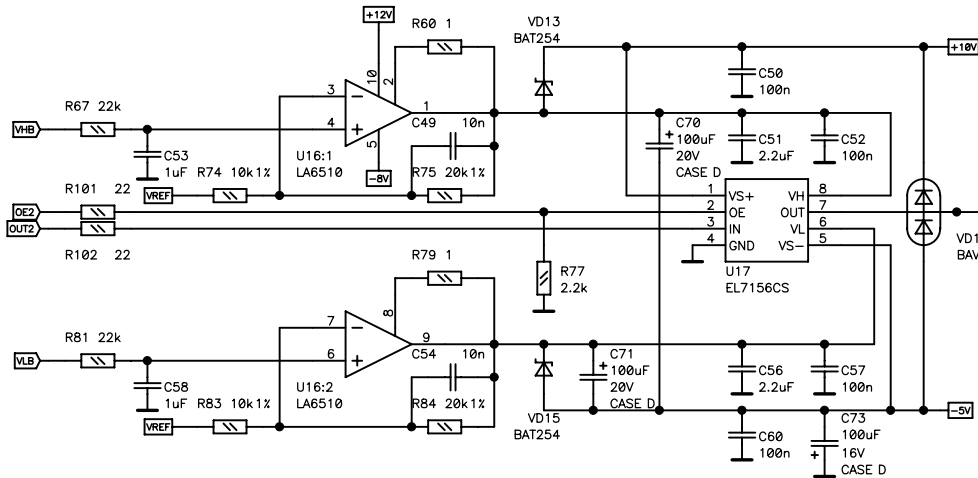
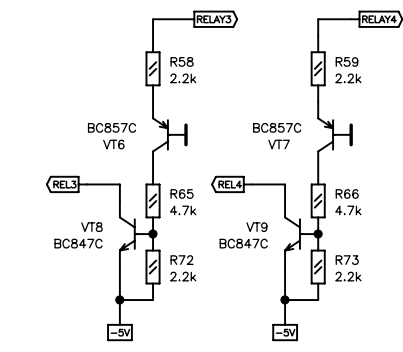
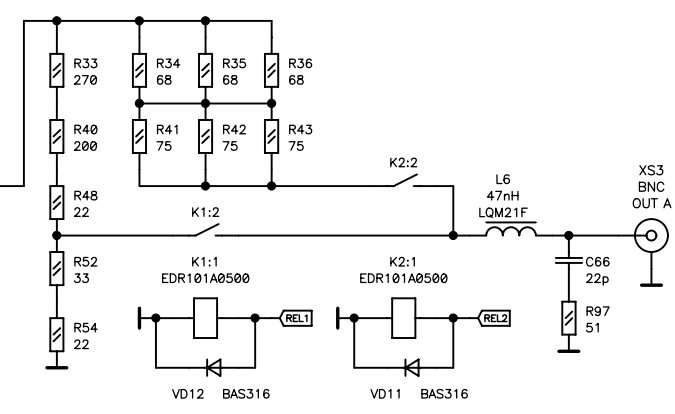
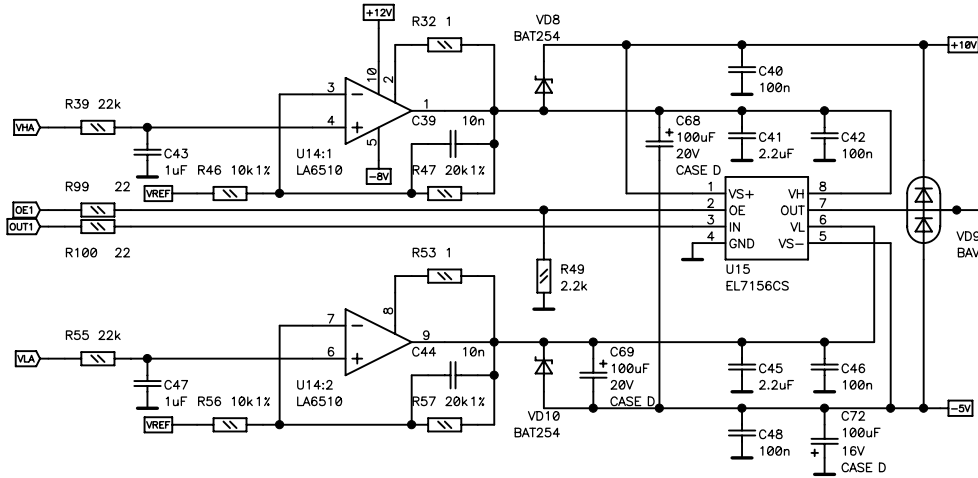
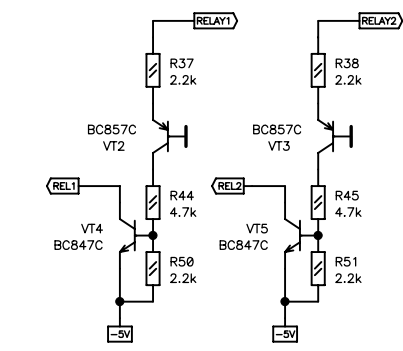
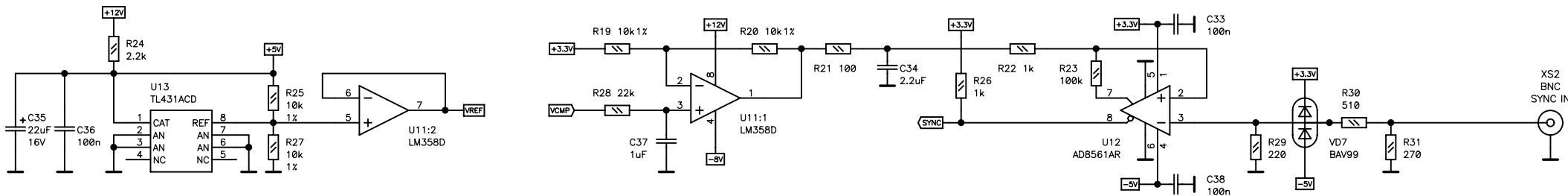
MISO	1
VCC	2
SCK	3
MOSI	4
RESET	5
GND	6

1	CATHODE
2	STEP
3	DOWN
4	UP
5	CHAN
6	EN-BT
7	EN-F1
8	EN-F2
9	RES
10	+3.3V
11	SDA
12	GND
13	SCL
14	ANODE

Company Name NSM lab		
Size A35	Title PG-872	Rev A
Date Thu Sep 25, 2014	Drawn by NSM lab	
Filename PG-872_Main_v4.Sch Sheet 1 of 3		



Company Name NSM lab		
Size A35	Title PG-872	Rev A
Date Thu Sep 25, 2014		Drawn by NSM lab
Filename PG-872_Main_v4.sch Sheet 2 of 3		



Company Name NSM lab		
Size A35	Title PG-872	Rev A
Date Thu Sep 25, 2014	Drawn by NSM lab	
Filename PG-872_Main_v4.sch Sheet 3 of 3		